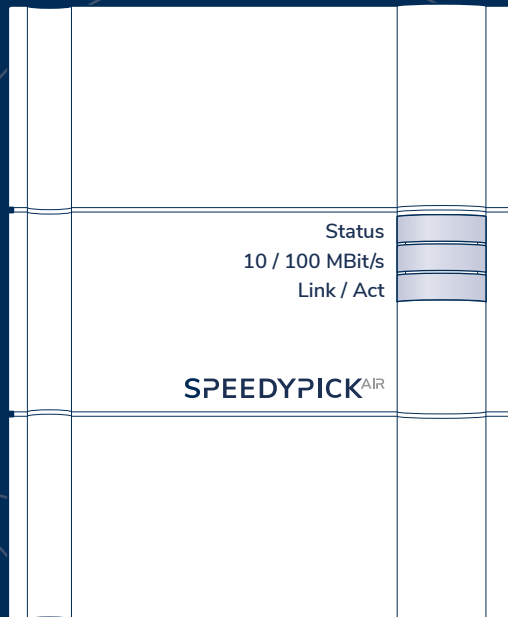




SPEEDYPICK^{2.5}

SPEEDYPICK^{AIR}



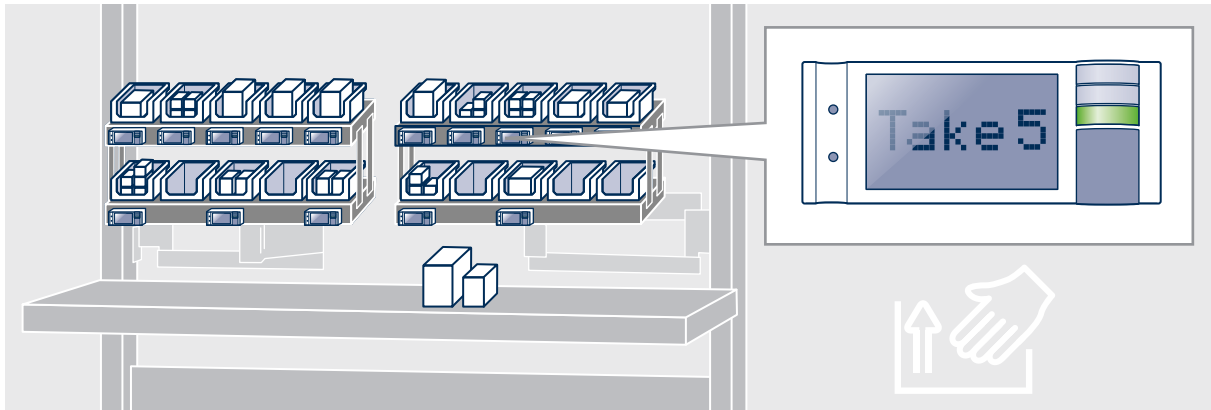
More success for your company:
with reliable SPEEDYPICK
Wireless Pick- & Put-to-Light Technology

www.speedypick.de

Benefit from our many years of experience in the field of Wireless Pick-to-Light Technology

EXAMPLE WORKER ASSISTANCE - every move is perfect

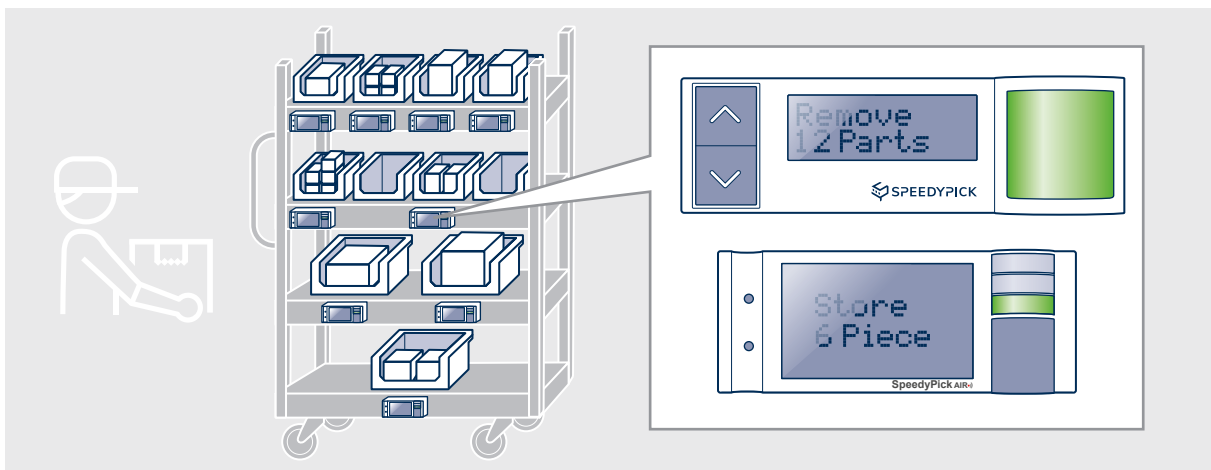
Whether it's a worker assistance system or an assembly workstation: SPEEDYPICK Wireless Pick-to-Light systems offer maximum comfort both in assembly and in operational use.



- ✓ Comparatively low installation effort
- ✓ Quick and easy conversion
- ✓ Convenient operation

EXAMPLE COMMISSIONING TROLLEY - mobile & flexible

Mobile applications: very easy with SPEEDYPICK^{2.5} or SPEEDYPICK^{AIR}.



- ✓ Optionally with central battery supply or single battery operation
- ✓ No unnecessary equipment overhead, weight savings, virtually no maintenance required
- ✓ Optimum use of space on the trolley
- ✓ High user comfort
- ✓ Roaming capable

SPEEDYPICK

EXAMPLE KANBAN-SHELF - quick & easy

You want to integrate existing or new Kanban shelves into your replenishment management?

With SPEEDYPICK^{AIR} it's easy: position the wireless pick-to-light displays directly on the shelf by means of a magnetic holder directly on the shelf. That's it!

A short press of the acknowledgement button by your worker triggers the replenishment request.



- ✓ Extremely long battery runtimes
- ✓ No wiring on the shelf

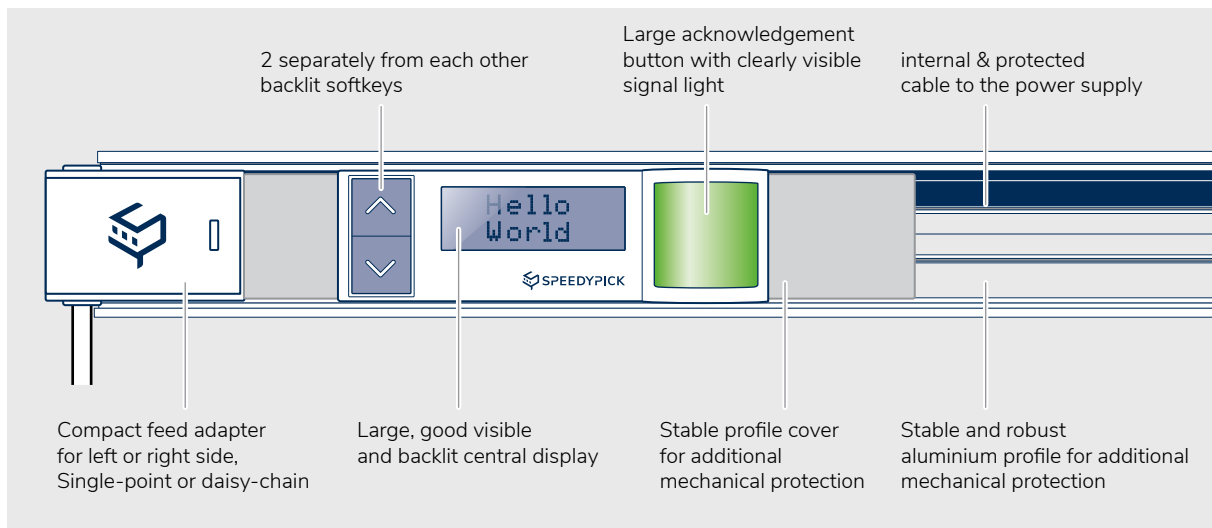
- ✓ Easy to retrofit
- ✓ Worker feedback (programmable)

Whether SPEEDYPICK^{2.5} or SPEEDYPICK^{AIR} – both systems offer maximum flexibility and degrees of freedom with the highest possible performance.

System SPEEDYPICK^{2.5}

Wireless Pick-to-Light with central power supply for the displays

Based on our many years of experience and know-how, SPEEDYPICK^{2.5} is specially designed for use on mobile units (e.g. picking trolleys) and is also ideally suited for equipping worker assistance systems as well as production and assembly cells.



ADVANTAGES AT A GLANCE

- ✓ Displays are protected and plugged toolless into the aluminium profile
- ✓ Displays can be positioned flexibly and are not bound to a rigid grid
- ✓ Power supply optionally via central battery or mains adapter (24 V DC)
- ✓ Battery can be replaced in a few seconds:
Downtimes are reduced to a minimum.
- ✓ Extremely long battery runtimes:
due to energy-efficient design of all SPEEDYPICK^{2.5}-components
- ✓ User-friendly component management supports first start-up scenario as well as regularly recurring scenarios.
- ✓ Roaming-capable components:
enable large area coverage

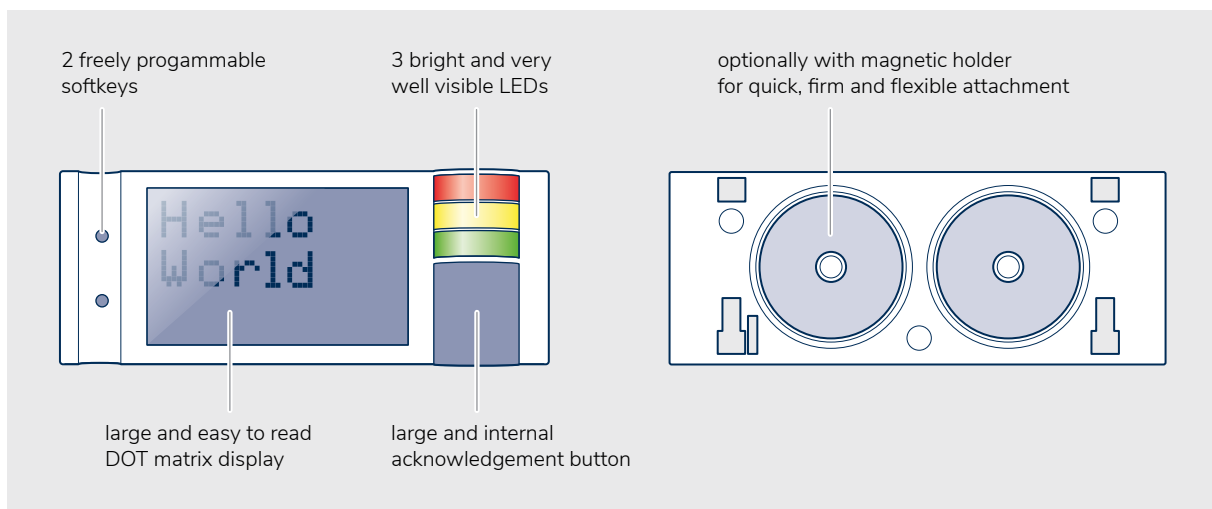
System SPEEDYPICK^{AIR}

Wireless Pick-to-Light: self-sufficient, independent, maximum flexibility

SPEEDYPICK^{AIR} – THE BATTERY-POWERED WIRELESS PICK-TO-LIGHT SYSTEM

With SPEEDYPICK^{AIR} you can implement mobile as well as stationary pick-to-light applications cost efficiently, simply and without great effort. SPEEDYPICK^{AIR} combines high performance with safety and a small footprint with maximum flexibility.

The „SpeedyCoS“ radio protocol, specially developed and patented for this system, is the basis for efficient radio management and ensures an extremely long battery life.

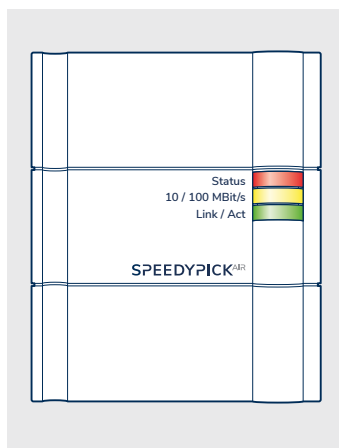


ADVANTAGES AT A GLANCE

- ✓ Instant change of position of the displays due to magnetic brackets
- ✓ Roaming-capable components: enable large area coverage

The SPEEDYPICK Access-Point

for SPEEDYPICK^{2.5} and /or SPEEDYPICK^{AIR}



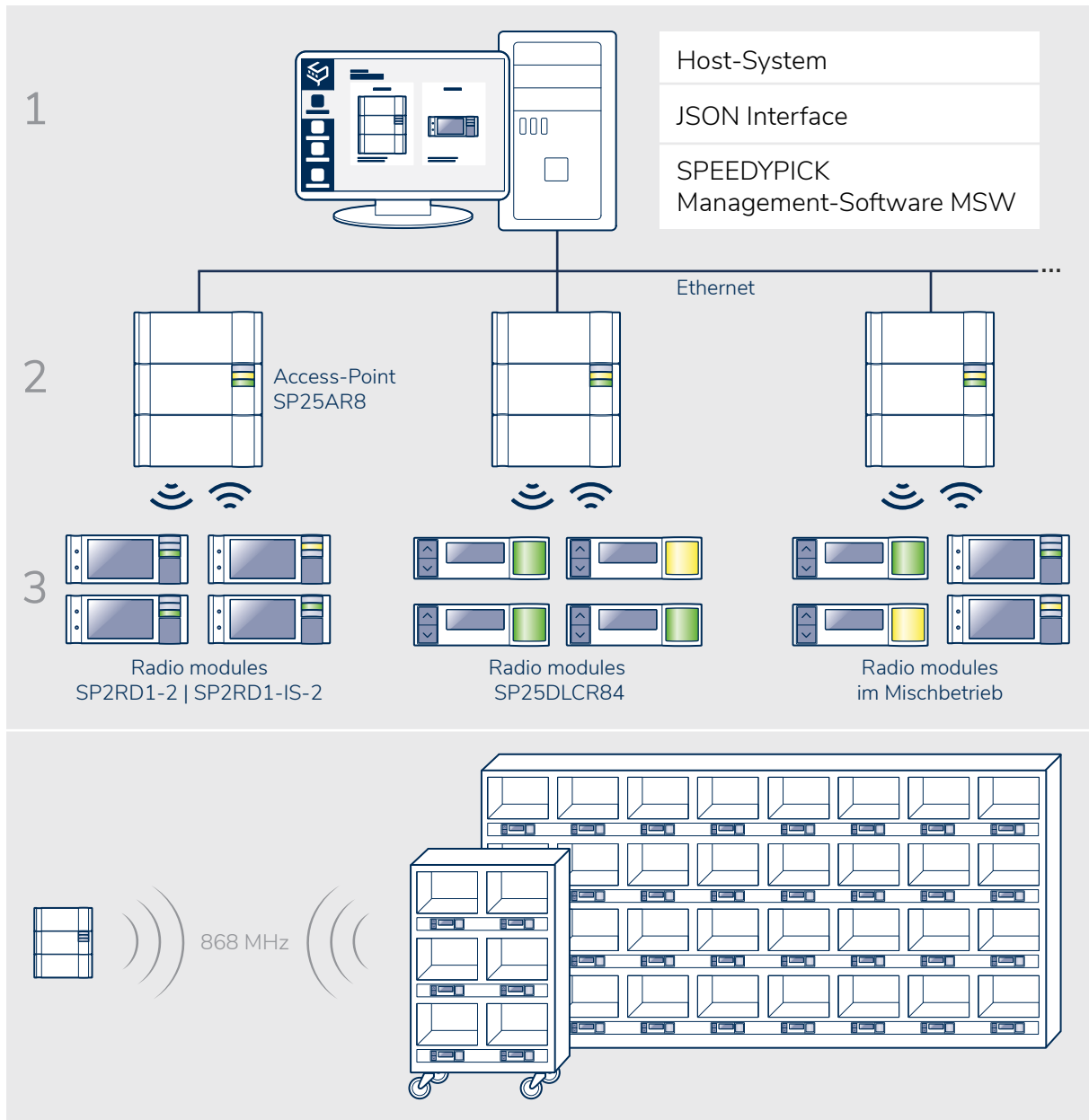
The SPEEDYPICK access point is the transition point from wired to wireless. The access point receives the data packets from the radio module and sends them via the network to the SPEEDYPICK management software. Vice versa, it delivers the data packages to the radio modules intended for this purpose. An access point can manage up to 100 radio modules.

- ✓ Any number of access points in the network
- ✓ 3 status LEDs on the front
- ✓ Typical radio range 100 m

The System Structure

The SPEEDYPICK system consists of 3 basic components:

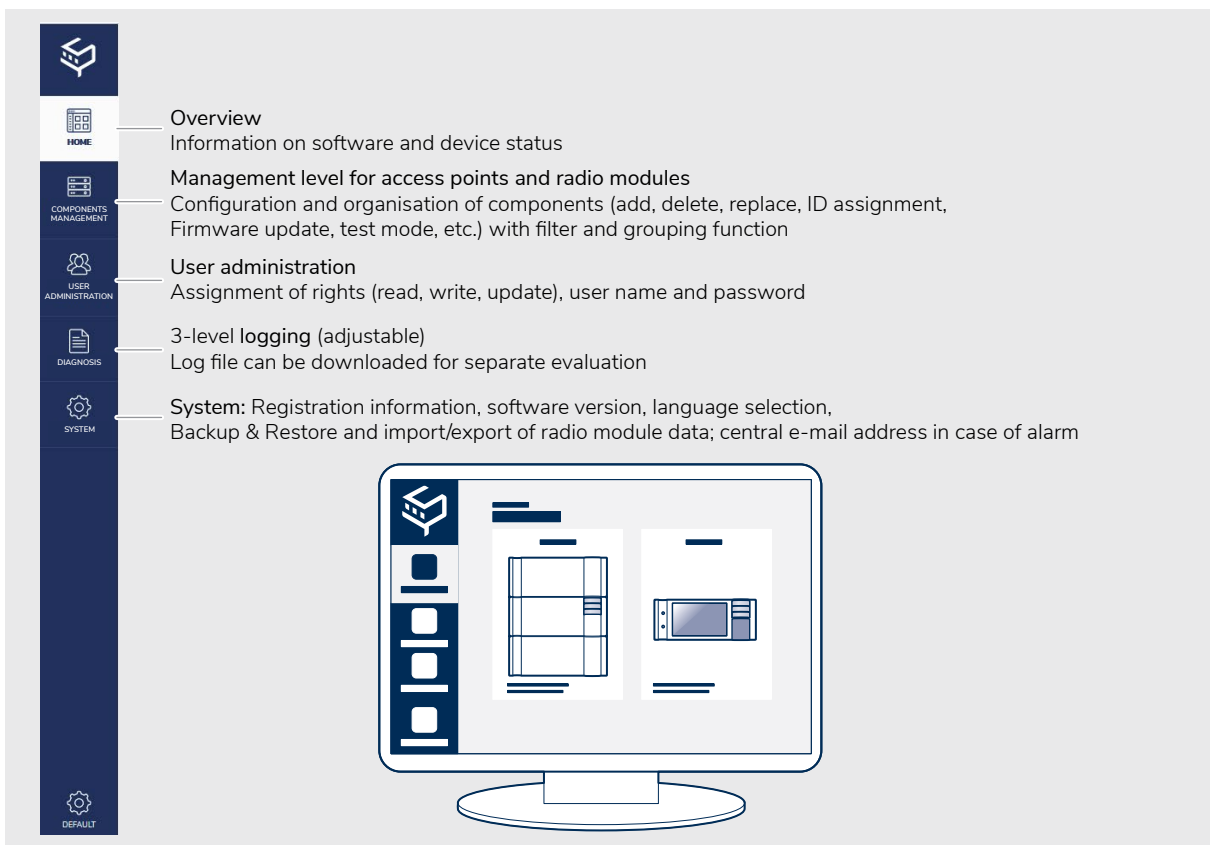
- ✓ 1 Server or PC with installed SPEEDYPICK Management Software (MSW) and a connection to your host system (e.g. WMS, LVS, SAP)
- ✓ 2 Access Points in the network (LAN, TCP/IP) which transmit instructions from the software wirelessly to the assigned radio modules
- ✓ 3 Radio modules at the storage locations (racks, picking trolleys, trolleys, mesh trolleys, etc.)



The MSW Management Software

ADVANTAGES AT A GLANCE

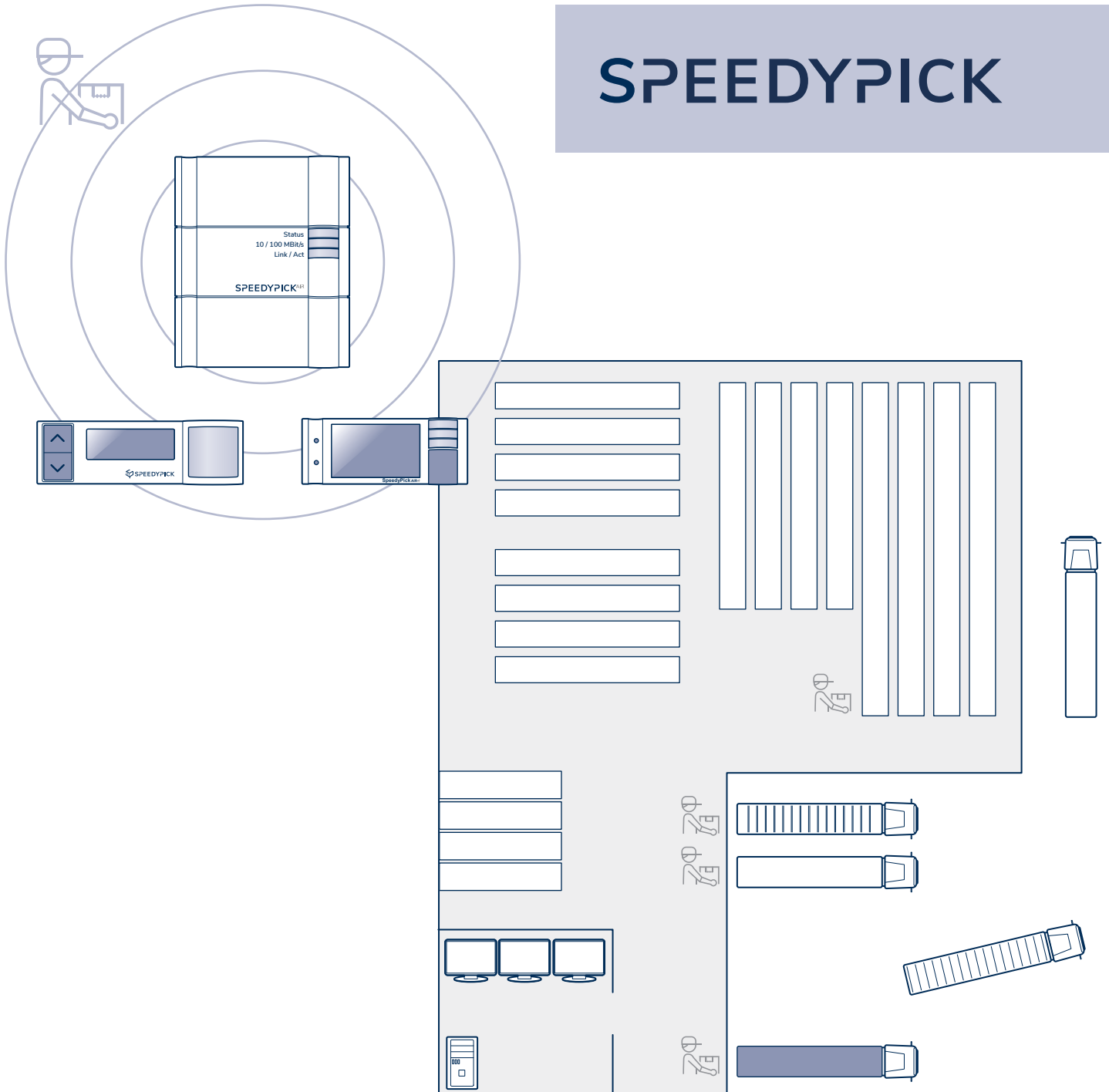
- ✓ Intuitive user guidance
- ✓ Guided support during initial commissioning
- ✓ High ease of use for standard processes during operation
e.g. system extension, retrofitting/conversion, configuration, replacement of a radio module
- ✓ JSON-RPC data interface, documented and „accessible“ for the user
- ✓ No costs for follow-up licences
- ✓ For SPEEDYPICK^{2.5} and SPEEDYPICK^{AIR} radio modules
- ✓ Excel macro (freeware) for simplified allocation of warehouse coordinates to radio modules
- ✓ Free test versions without functional restrictions
(can be used for several weeks)
- ✓ for Microsoft Windows 10 or Linux operating systems



The screenshot displays the software's user interface. On the left is a vertical sidebar menu with icons and labels for: HOME, COMPONENTS MANAGEMENT, USER ADMINISTRATION, DIAGNOSIS, SYSTEM, and DEFAULT. The main area contains text descriptions for each menu item, with lines pointing to the corresponding icons. Below the text is a stylized illustration of a computer monitor showing a simplified version of the software's main interface.

- HOME** — Overview
Information on software and device status
- COMPONENTS MANAGEMENT** — Management level for access points and radio modules
Configuration and organisation of components (add, delete, replace, ID assignment, Firmware update, test mode, etc.) with filter and grouping function
- USER ADMINISTRATION** — User administration
Assignment of rights (read, write, update), user name and password
- DIAGNOSIS** — 3-level logging (adjustable)
Log file can be downloaded for separate evaluation
- SYSTEM** — System: Registration information, software version, language selection,
Backup & Restore and import/export of radio module data; central e-mail address in case of alarm

SPEEDYPICK



eQ-3 AG, SPEEDYPICK
Maiburger Str. 29
26789 Leer / Germany

+49 491 6008 400
info@speedypick.de

SPEEDYPICK.DE

Version 1.0 (02/2022) | 170104